

Join the dots to reveal a work from the Picasso collection. Then see if you can find it in this room.



MUKUDJ MASK
Picasso was greatly inspired by African masks. This one comes from the Punu peoples of Gabon in Central Africa. It is made of kapok tree wood and coated with kaolin, a clay that is used to make a white powder. It represents the spirit of a young girl. This type of mask was often used during ceremonies.

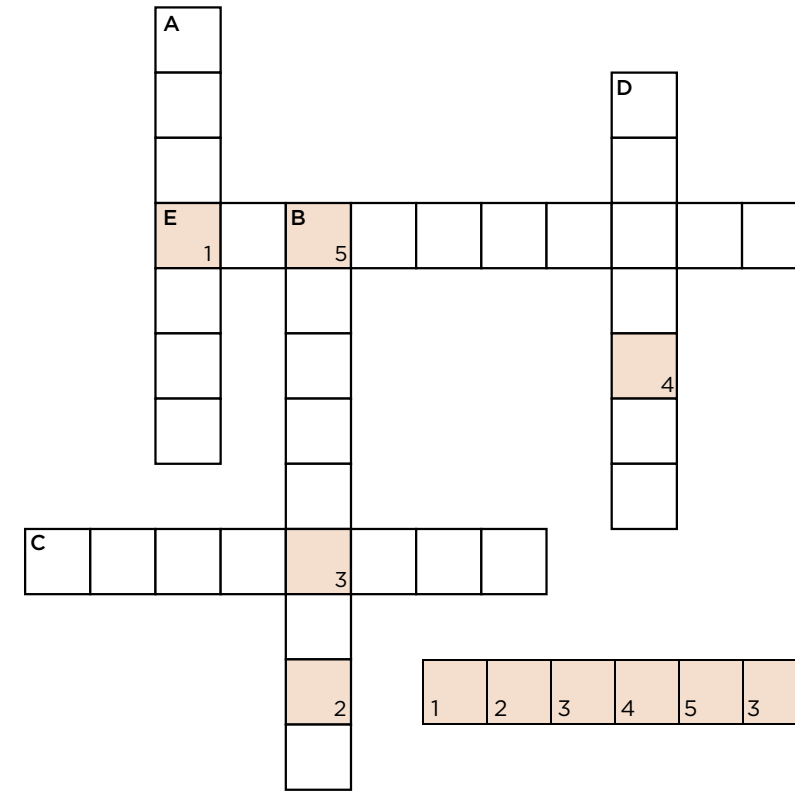
PICASSO FOUND INSPIRATION IN THE WORKS OF THE GREAT MASTERS
Picasso loved going to museums. When he was a child in Spain, he often went with his father. In Paris, he regularly visited the famous museums to see the works of the “great masters”. He studied their paintings, making sketches and then creating his own version. This painting was inspired by Edouard Manet’s *Le Déjeuner sur l’herbe*. Picasso’s version depicts the same four figures, but one of them has changed position: which one?

Spot the intruder in Picasso’s painting.



Answer: The man sitting on the left has become a reclining figure reading.

CROSSWORD
Do you remember the different artistic techniques used by Picasso? Find the words that match the definitions below. The letters coloured grey form the mystery word.

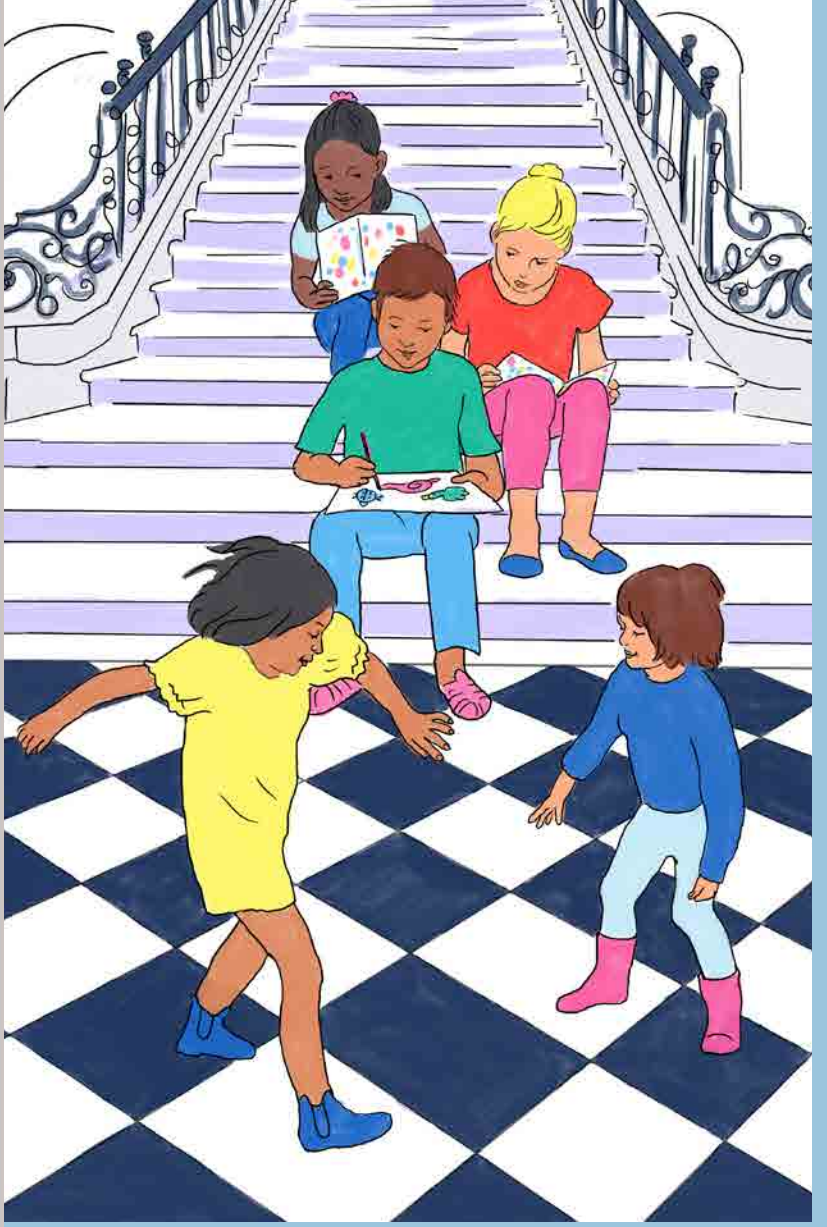
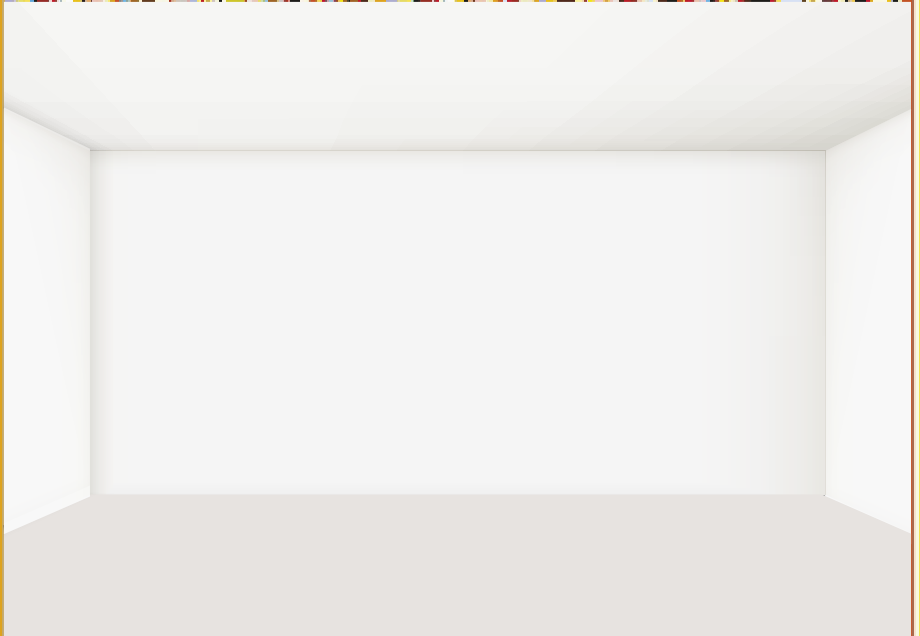


- A : artistic technique using clay
- B : art that consists of creating three-dimensional works
- C : art using brushes and canvas
- D : art using pencil and paper
- E : creative technique using everyday objects

Answer : A, ceramic. B, sculpture. C, painting. D, drawing. E, assemblage – secret word : artist

SCENOGRAPHY
Do you know the meaning of the word “scenography”? It is the way a space is arranged. For a museum room, the scenographer thinks about the layout of the space, where to position the works, the lighting, colour of the walls and floor and the decor. As you go around the exhibition, you’ll notice that it is very original because no two rooms are alike. Why is that? Well, it’s because the scenography is by Paul Smith, an English fashion designer who wanted to create a unique decor for each room.

When you come to the end of your visit, draw your favourite room in the empty space below.



ACTIVITY
MuséePicassoParis

BOOKLET

HOLÀ!

Wecome to the exhibition
"Picasso celebrations,
the collection in a new light!"

This booklet will guide you
around the exhibition
so you can find out more about
Pablo Picasso.

WHO IS PABLO PICASSO?



Pablo Picasso was a Spanish artist, painter and sculptor. He was born in 1881 and died in 1973. He spent a large part of his life in France. He produced many works and is one of the most important artists of the 20th century.

Find this work in the room and circle the objects it's made of:



- Lamp Ladle Book Fabrics Claw
Spade Pencil Wood Jewellery
String Nail Brush Paper

ASSEMBLAGE

Picasso loved assembling a variety of everyday objects to make sculptures. These objects can no longer be used normally as they are part of a work of art.

LA COMMEDIA DELL'ARTE

Commedia dell'arte is a type of comic theatre invented in Italy about 500 years ago. There are several types of characters (masters, servants, lovers, soldiers). Most of the actors wear masks.



Which Commedia dell'arte character do you think inspired this painting?



- ☐ Harlequin ☐ Pierrot ☐ Pantalone ☐ Pulcinella

WORLD WAR II

The colours in this painting remind us of a material: which one do they make you think of?



- ☐ Wood ☐ Metal ☐ Wax ☐ Plastic ☐ Stone

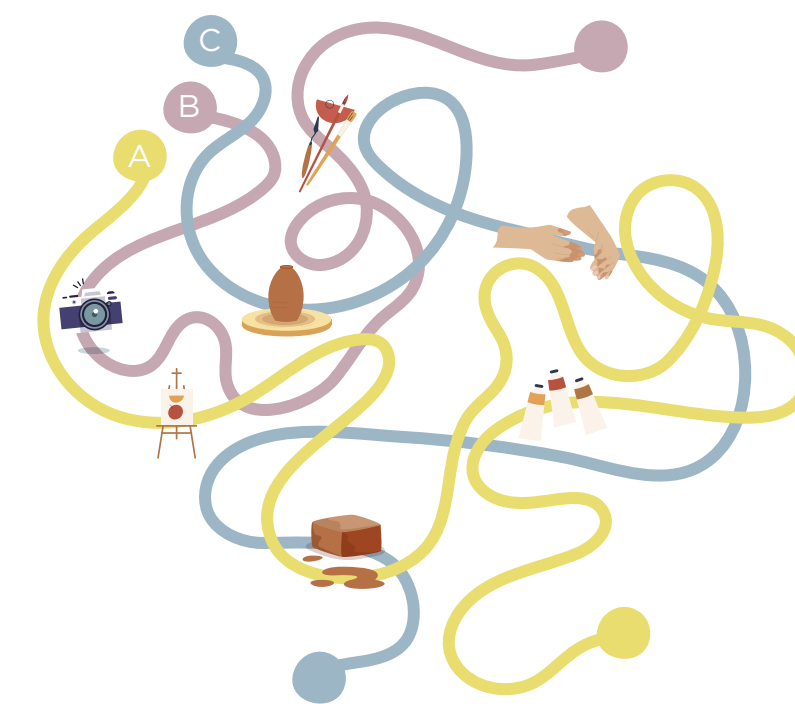


This work, which Picasso painted during the Second World War, shows a jug on the left and a rodent skeleton on the right. What do you think of the colours? They are cold: grey is dominant and makes us think of the colour of metal, which is the material most commonly used to make weapons.

THE TECHNIQUE OF CERAMICS

As well as paintings, drawings and sculptures, Picasso also made ceramics - that is the art of creating an object in clay. To do this, you have to model a ball of clay to give it a shape, then fire it. You can also decorate it. Many of the objects we use every day, such as plates, bowls, pots and jugs, are made of ceramic.

Find your way through the maze of tools used to make ceramic objects (clay, hands, kiln)



Answer: metal

Can you find the shape below that matches this portrait?



A

B

C

THE FACE - PROFILE

This woman's face is unusual: Picasso painted her from the front and from the side at the same time. That is his trademark. He invented this way of painting portraits because he wanted to show his characters from different points of view.